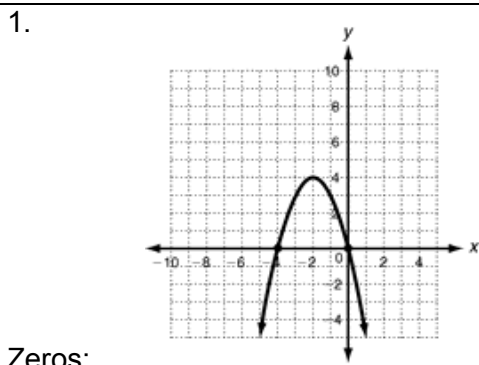
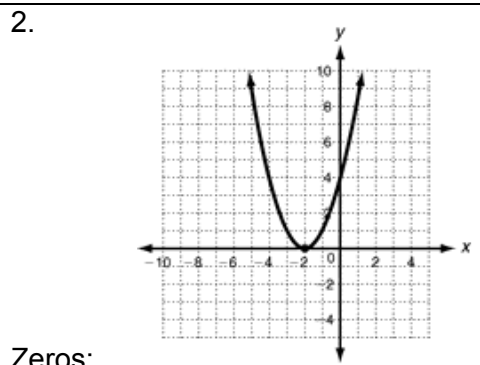


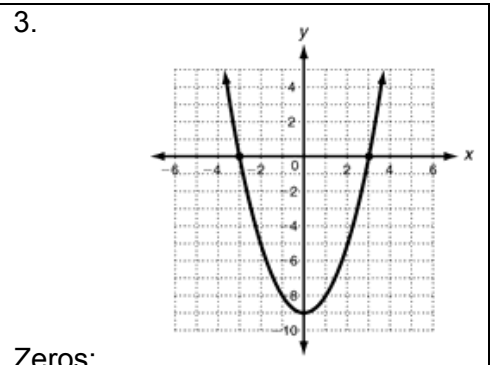
Determine the value of the zeros, the equation of the axis of symmetry, the max or min value and the vertex.



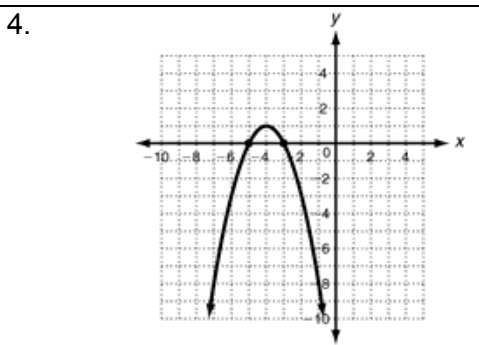
Zeros:  
 Axis of symmetry:  
 Max or Min:  
 Vertex:



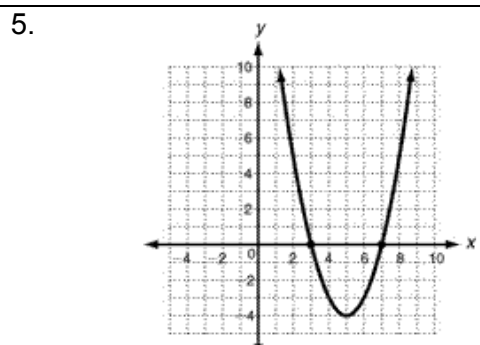
Zeros:  
 Axis of symmetry:  
 Max or Min:  
 Vertex:



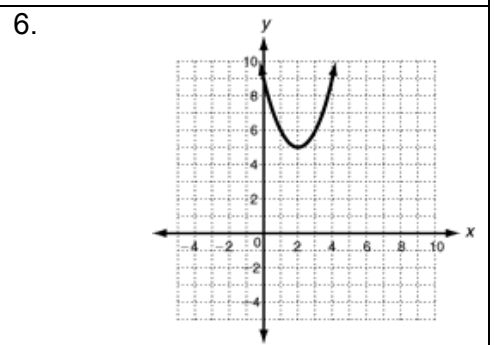
Zeros:  
 Axis of symmetry:  
 Max or Min:  
 Vertex:



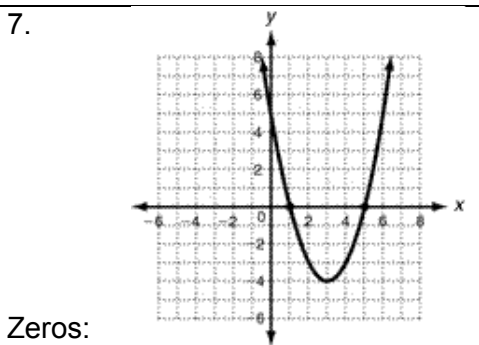
Zeros:  
 Axis of symmetry:  
 Max or Min:  
 Vertex:



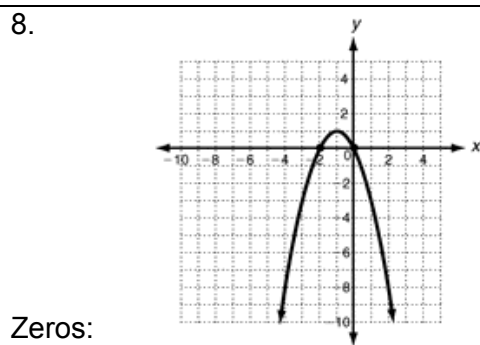
Zeros:  
 Axis of symmetry:  
 Max or Min:  
 Vertex:



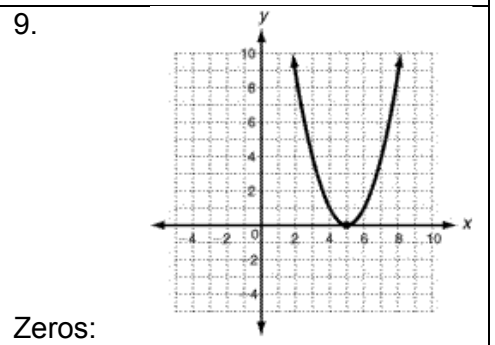
Zeros:  
 Axis of symmetry:  
 Max or Min:  
 Vertex:



Zeros:  
 Axis of symmetry:  
 Max or Min:  
 Vertex:



Zeros:  
 Axis of symmetry:  
 Max or Min:  
 Vertex:



Zeros:  
 Axis of symmetry:  
 Max or Min:  
 Vertex: