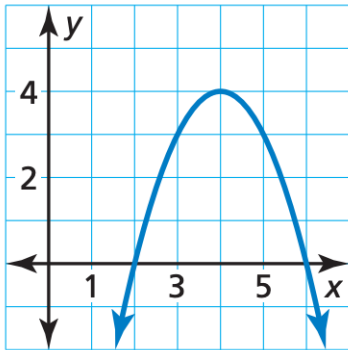


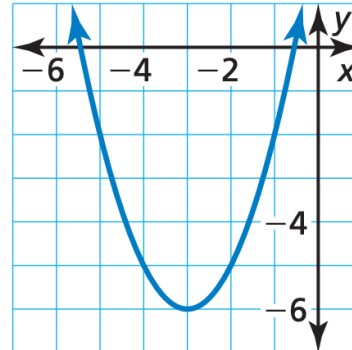
Homework Week of March 1

1.) Identify the domain and range of the following functions.



Domain _____

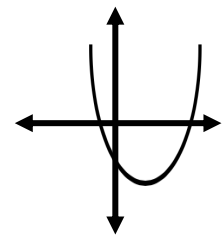
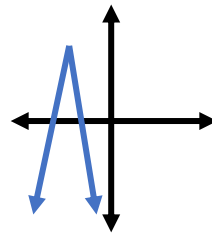
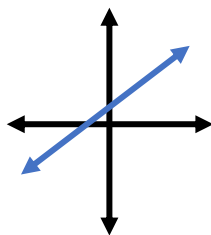
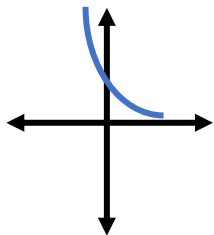
Range _____



Domain _____

Range _____

2.) Identify the function family to which each function belongs.



$y = -3x + 15$	
$f(x) = 6(x - 4)^2 + 8$	
$y = \frac{1}{3} x + 5 - 6$	
$y = x^2 - 8x + 64$	

Complete the tables for each equation.

3.) $y = -2x^2 + 4x - 8$

Direction of opening	
Maximum or minimum	
Axis of symmetry	
Vertex	
y-intercept	
Domain	
Range	

4.) $f(x) = -2(x - 2)^2 + 18$

Direction of opening	
Maximum or minimum	
Axis of symmetry	
Vertex	
y-intercept	
Domain	
Range	

Simplify each polynomial expression.

5.) $3x(x + 4) + (x - 8)(x + 5)$

6.) $(2x + 4)(x - 3) - (5x + 2)$

Factor the polynomial completely.

7.) $16x^2 - 81$

8.) $-2x^2 + 8x + 10$

Solve.

9.) $x^2 + 3x - 28$

10.) $2x^2 + x - 10$